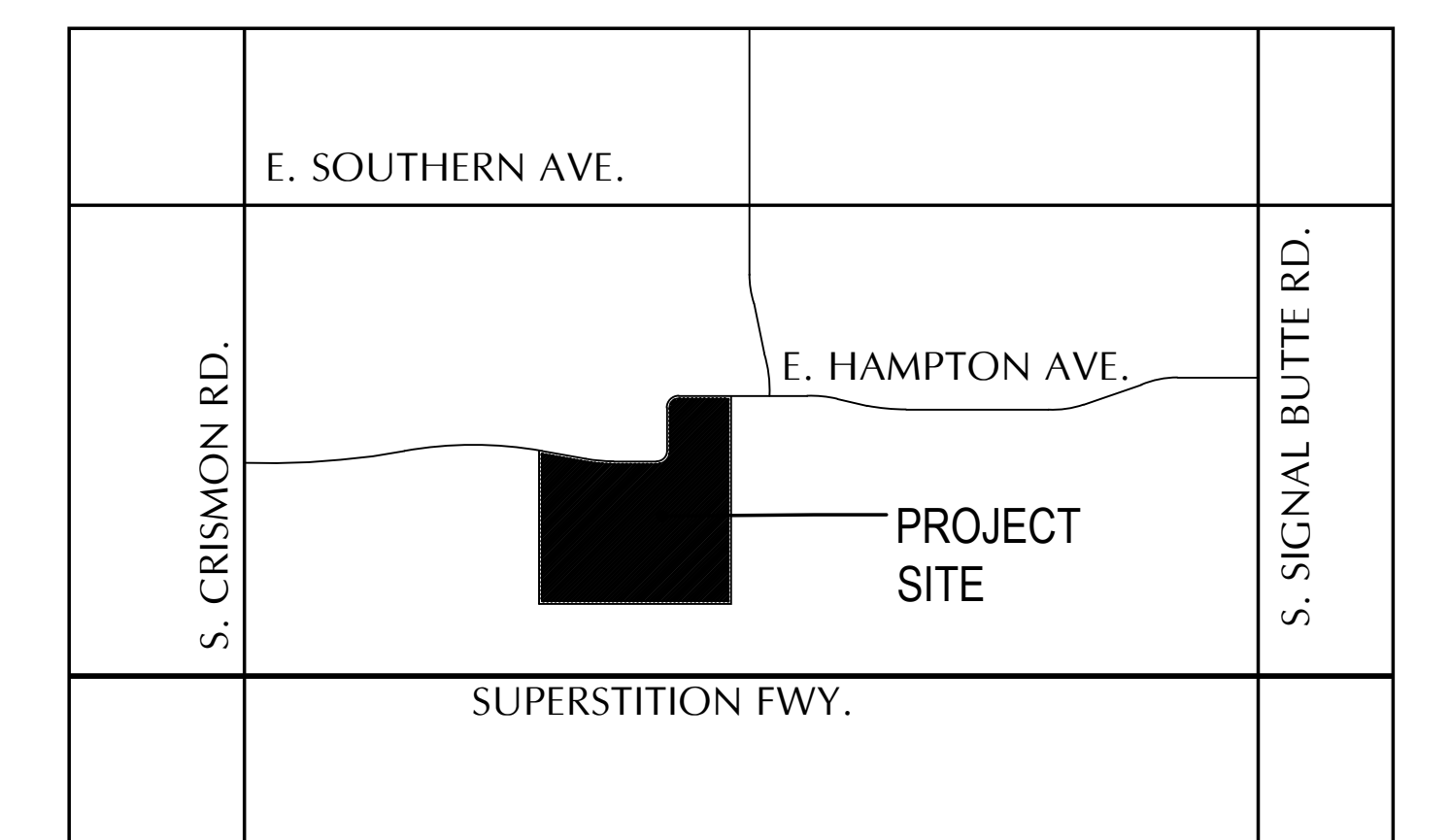


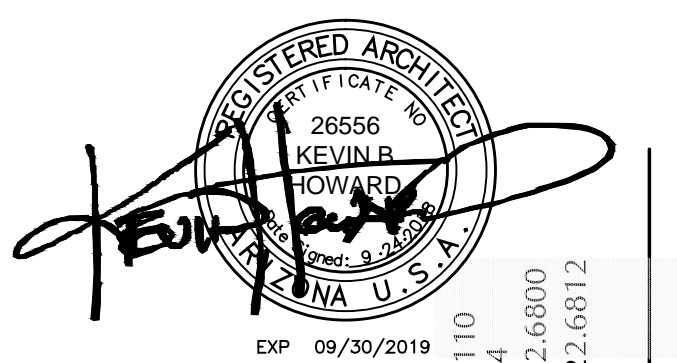
GRANDE Vita

a BioCity Enterprise

Skilled Nursing School / Rehabilitation



LOCATION MAP
SCALE: N.T.S.



8339 N Oracle Rd
Suite 110
Scottsdale, Arizona
85258
Phone 480.342.6800
Fax 480.342.6812
www.kbharchitect.com

Kevin B. Howard
ARCHITECTS
Incorporated
AIA

GRANDE Vita
a BioCity Enterprise
10243 E. Hampton Ave., Mesa, Arizona, 85209

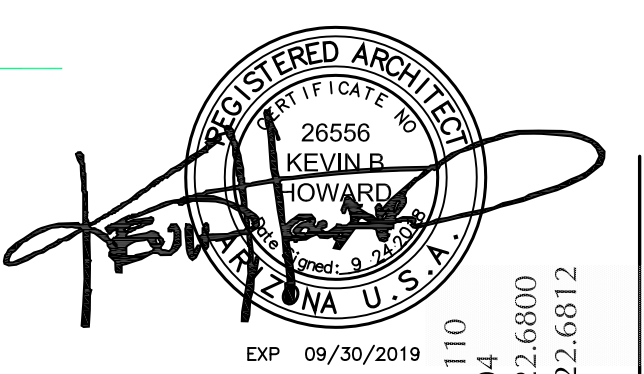
Skilled Nursing School/
Rehabilitation

© 2018 Kevin B. Howard Architects, Inc.
All rights reserved.
THESE DRAWINGS ESTABLISH THE GENERAL
STANDARDS OF QUALITY AND DETAIL FOR
DEVELOPING A CONSTRUCTION CONTRACT.
ALL INFORMATION ON THESE DRAWINGS ARE
THE PROPERTY OF KBH ARCHITECTS AND
ARE INTENDED FOR THIS PROJECT ONLY.

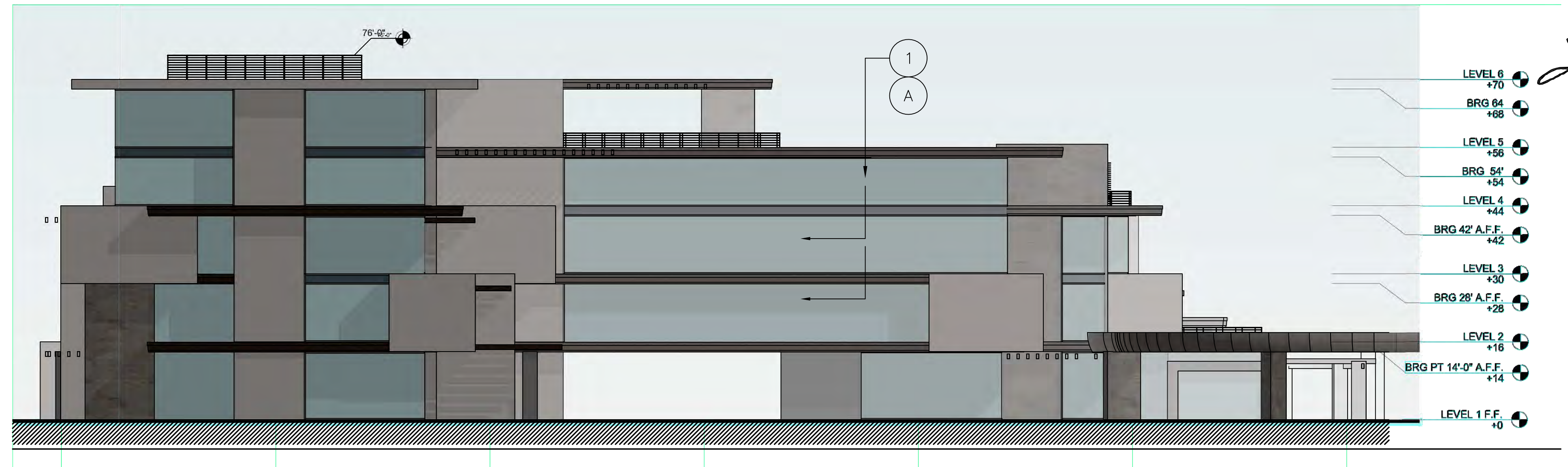
Job: 2017-12
Date: 09.24.2018

REVISIONS:

Drawn By:
J. E. Brown
H.S. Walker
Checked By:
J. E. Brown



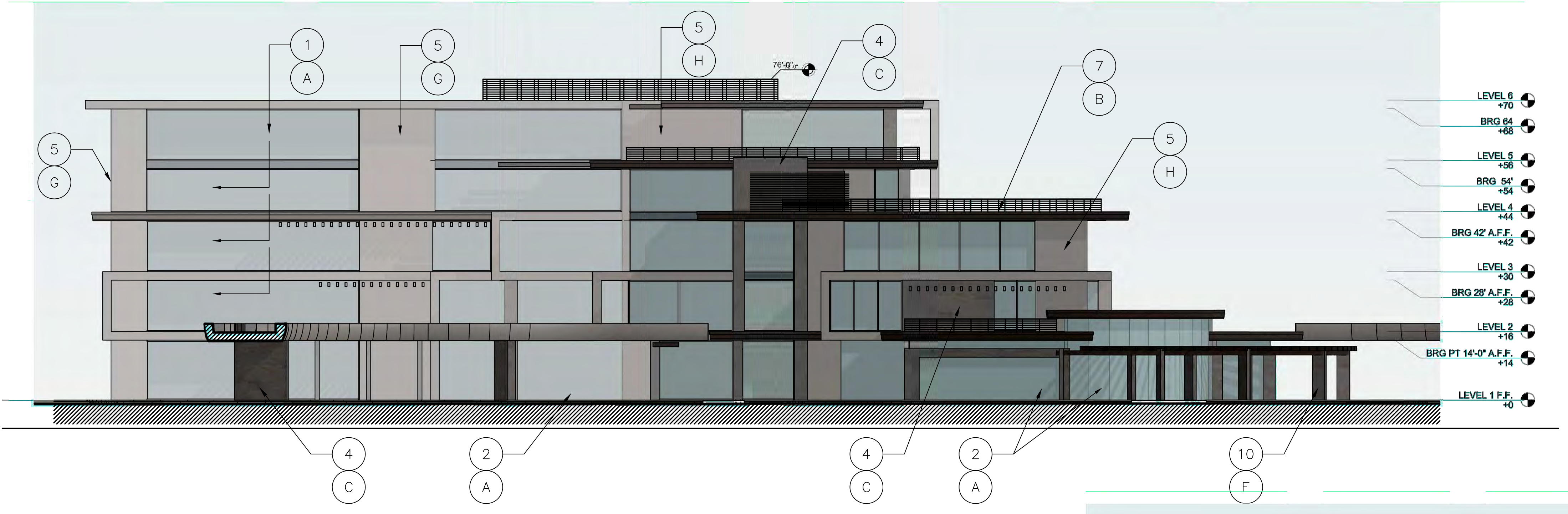
Kevin B. Howard
 Suite 110
 8319 N Oracle Rd
 Tucson, Arizona 85704
 Phone 520.322.6800
 Fax 520.322.6812
 www.kbharchitect.com



EAST ELEVATION

SCALE: 1/16" = 1'-0"

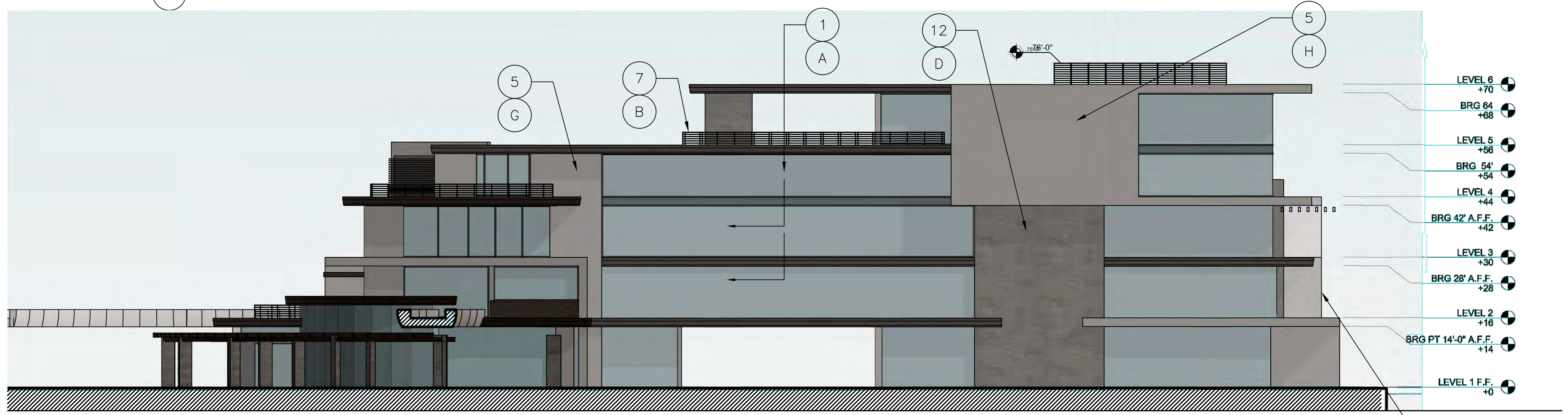
- LEVEL 6 +70
- BRG 64 +68
- LEVEL 5 +56
- BRG 54 +54
- LEVEL 4 +44
- BRG 42' A.F.F. +42
- LEVEL 3 +30
- BRG 28' A.F.F. +28
- LEVEL 2 +16
- BRG PT 14'-0" A.F.F. +14
- LEVEL 1 F.F. +0



NORTH ELEVATION

SCALE: 1/16" = 1'-0"

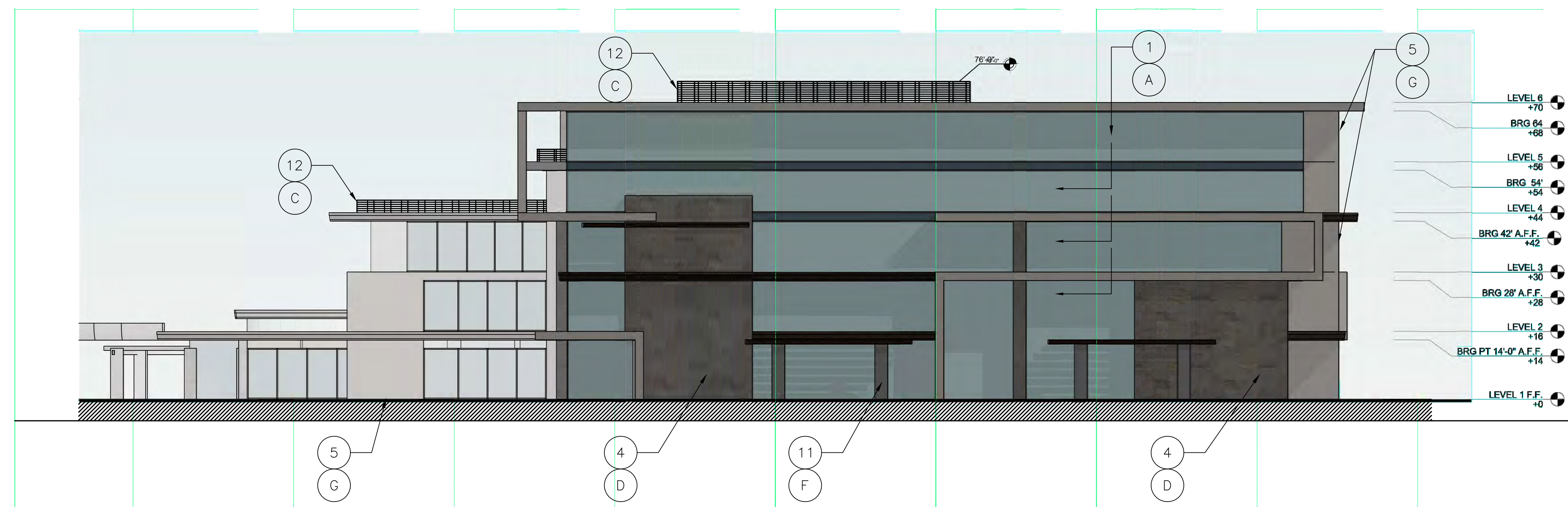
- LEVEL 6 +70
- BRG 64 +68
- LEVEL 5 +56
- BRG 54 +54
- LEVEL 4 +44
- BRG 42' A.F.F. +42
- LEVEL 3 +30
- BRG 28' A.F.F. +28
- LEVEL 2 +16
- BRG PT 14'-0" A.F.F. +14
- LEVEL 1 F.F. +0



WEST ELEVATION

SCALE: 1/16" = 1'-0"

- LEVEL 6 +70
- BRG 64 +68
- LEVEL 5 +56
- BRG 54 +54
- LEVEL 4 +44
- BRG 42' A.F.F. +42
- LEVEL 3 +30
- BRG 28' A.F.F. +28
- LEVEL 2 +16
- BRG PT 14'-0" A.F.F. +14
- LEVEL 1 F.F. +0



SOUTH ELEVATION

SCALE: 1/16" = 1'-0"

- LEVEL 6 +70
- BRG 64 +68
- LEVEL 5 +56
- BRG 54 +54
- LEVEL 4 +44
- BRG 42' A.F.F. +42
- LEVEL 3 +30
- BRG 28' A.F.F. +28
- LEVEL 2 +16
- BRG PT 14'-0" A.F.F. +14
- LEVEL 1 F.F. +0

KEYNOTES AND SPECIFICATIONS

- A. ALL COLORS, SIZES, AND MATERIALS TO BE VERIFIED WITH ARCHITECT PRIOR TO CONSTRUCTION FOR COORDINATION WITH DRAWINGS.
 - B. SEE ELECTRICAL PLAN FOR COORDINATION WITH POWER REQUIREMENTS FOR ALL ITEMS.
 - C. INSTALLERS TO FOLLOW ALL STANDARDS AND RECOMMENDATIONS OF MANUFACTURER SPECIFICATIONS.
 - D. FOR BUILT-IN CABINETRY REFER TO ARCHITECTURAL INTERIOR ELEVATIONS.
 - E. SUBMIT ALL SHOP DRAWINGS OR SUBSTITUTE SPECIFICATIONS TO ARCHITECT FOR APPROVAL AND COORDINATION PRIOR TO CONSTRUCTION.
1. VITRO ARCHITECTUREAL GLASS PPG SOLARBLUE® GLASS CURTAIN WALL GLAZING SYSTEM
 2. VITRO ARCHITECTUREAL GLASS PPG SOLARBLUE® GLASS STORE FRONT GLAZING SYSTEM
 3. VITRO ARCHITECTUREAL GLASS PPG SOLARBLUE® GLASSOPERABLE GLAZING SYSTEM
 4. "ALUCABOND" METAL PANEL SYSTEM (OR EQUAL)
 5. EPS - "DRYVIT" SYNTHETIC STUCCO SYSTEM (OR EQUAL)
 6. PRE-FINISHED METAL FASCIAZZ GAUGE
 7. METAL RAILING SYSTEM
 8. GLASS RAILING SYSTEM
 9. STEEL TRELIS DETAIL
 10. NATURAL STONE VENEER
 11. TILE VENEER (CERAMIC OR PORCELAIN)
 12. PRE-FINISHED METAL SIDING (22 GAUGE)

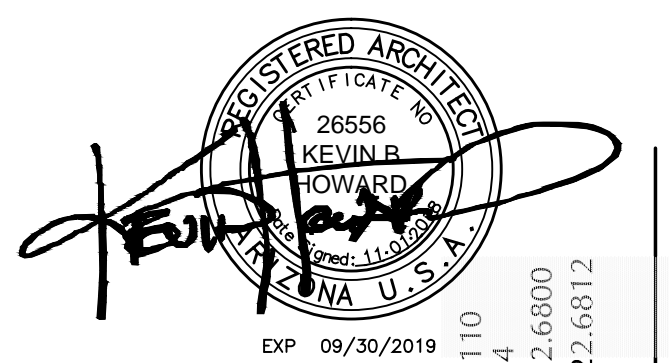
Skilled Nursing School/
 Rehabilitation
 Exterior Elevations

© 2018 Kevin B. Howard Architects, Inc. All rights reserved. THESE DRAWINGS ESTABLISH THE GENERAL STANDARDS OF QUALITY AND DETAIL FOR DEVELOPING A CONSTRUCTION CONTRACT. ALL INFORMATION ON THESE DRAWINGS ARE THE PROPERTY OF KBH ARCHITECTS AND ARE INTENDED FOR THIS PROJECT ONLY.

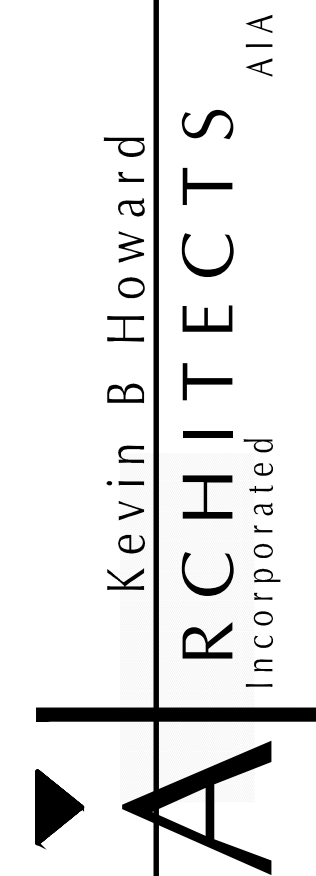
Job: 2017-12
 Date: 09.24.2018
 REVISIONS:

Drawn By:
 J. E. Brown
 H.S. Walker
 Checked By:
 J. E. Brown

A5.3



8339 N Oracle Rd Suite 110
Tucson Arizona 85704
Phone 520.322.6600
Fax 520.322.6612
www.kbharchitect.com



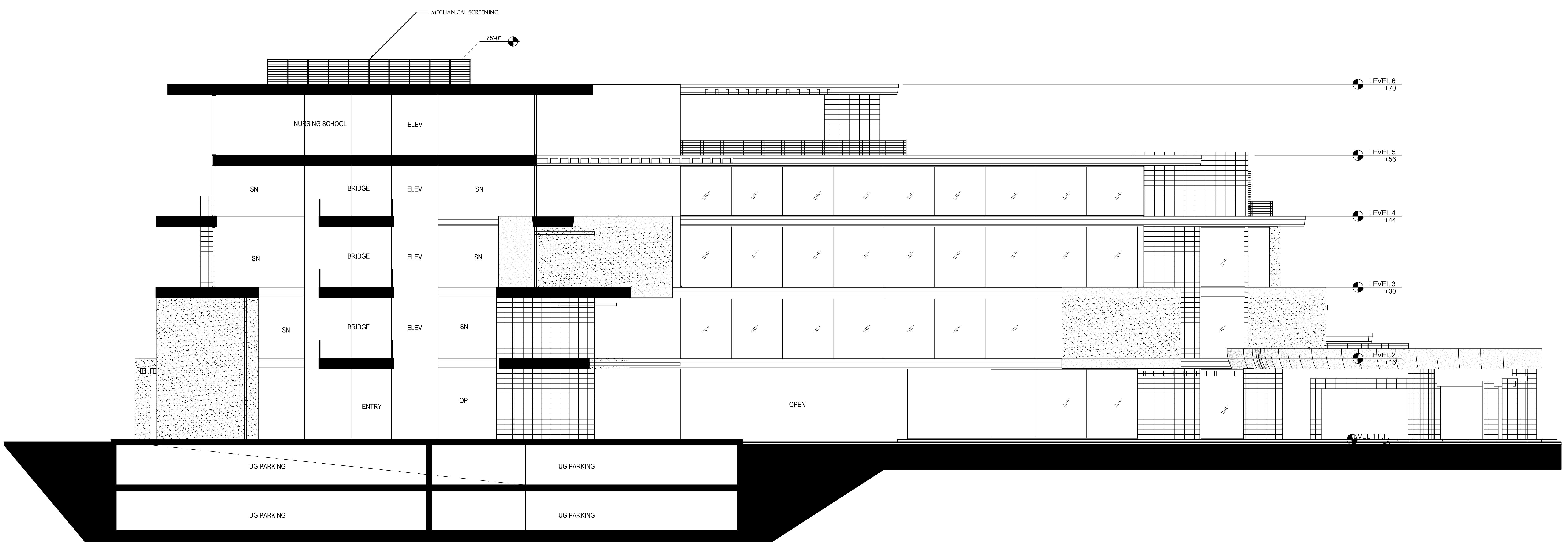
Skilled Nursing School/
Rehabilitation
Building Section

© 2018 Kevin B. Howard Architects, Inc.
All rights reserved.
THESE DRAWINGS ESTABLISH THE GENERAL
STANDARDS OF QUALITY AND DETAIL FOR
DEVELOPING A CONSTRUCTION CONTRACT.
ALL INFORMATION ON THESE DRAWINGS ARE
THE PROPERTY OF KBH ARCHITECTS AND
ARE INTENDED FOR THIS PROJECT ONLY.

Job: 2017-12
Date: 11.01.2018
REVISIONS:

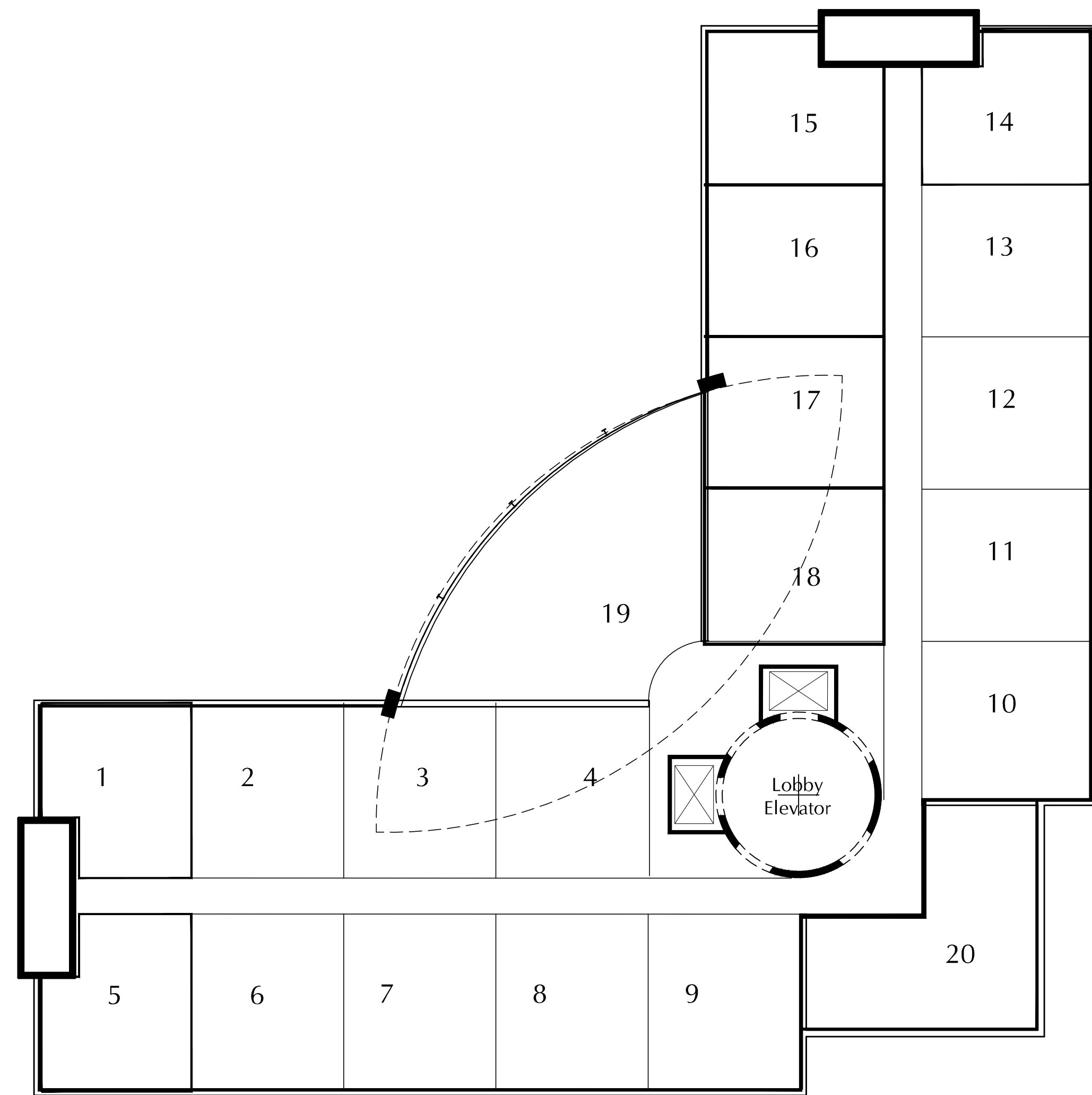
Drawn By:
J. E. Brown
H.S. Walker
Checked By:
J. E. Brown

A5.5

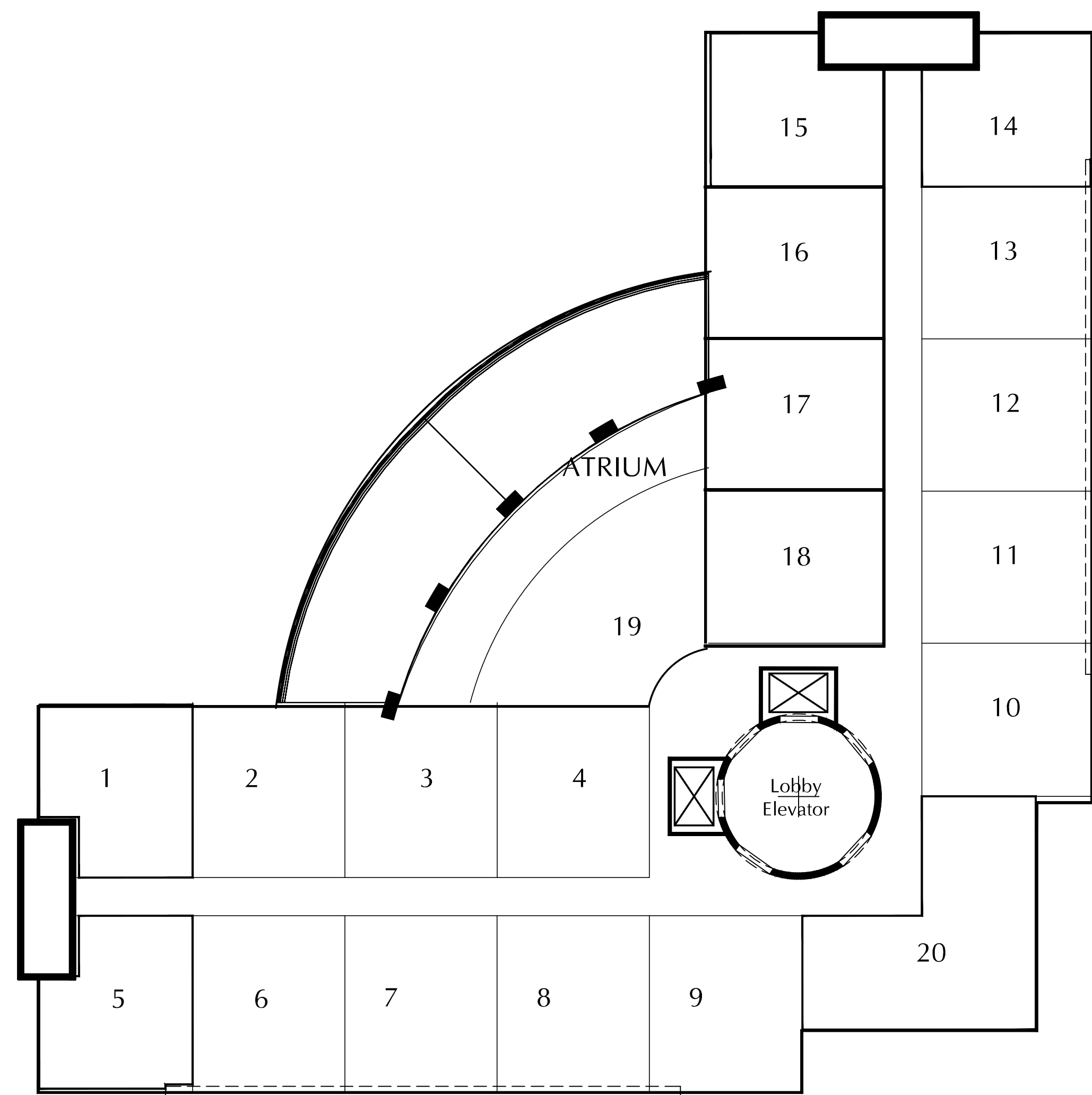


TRANSVERSE BUILDING SECTION

SCALE: 1/8" = 1'-0"



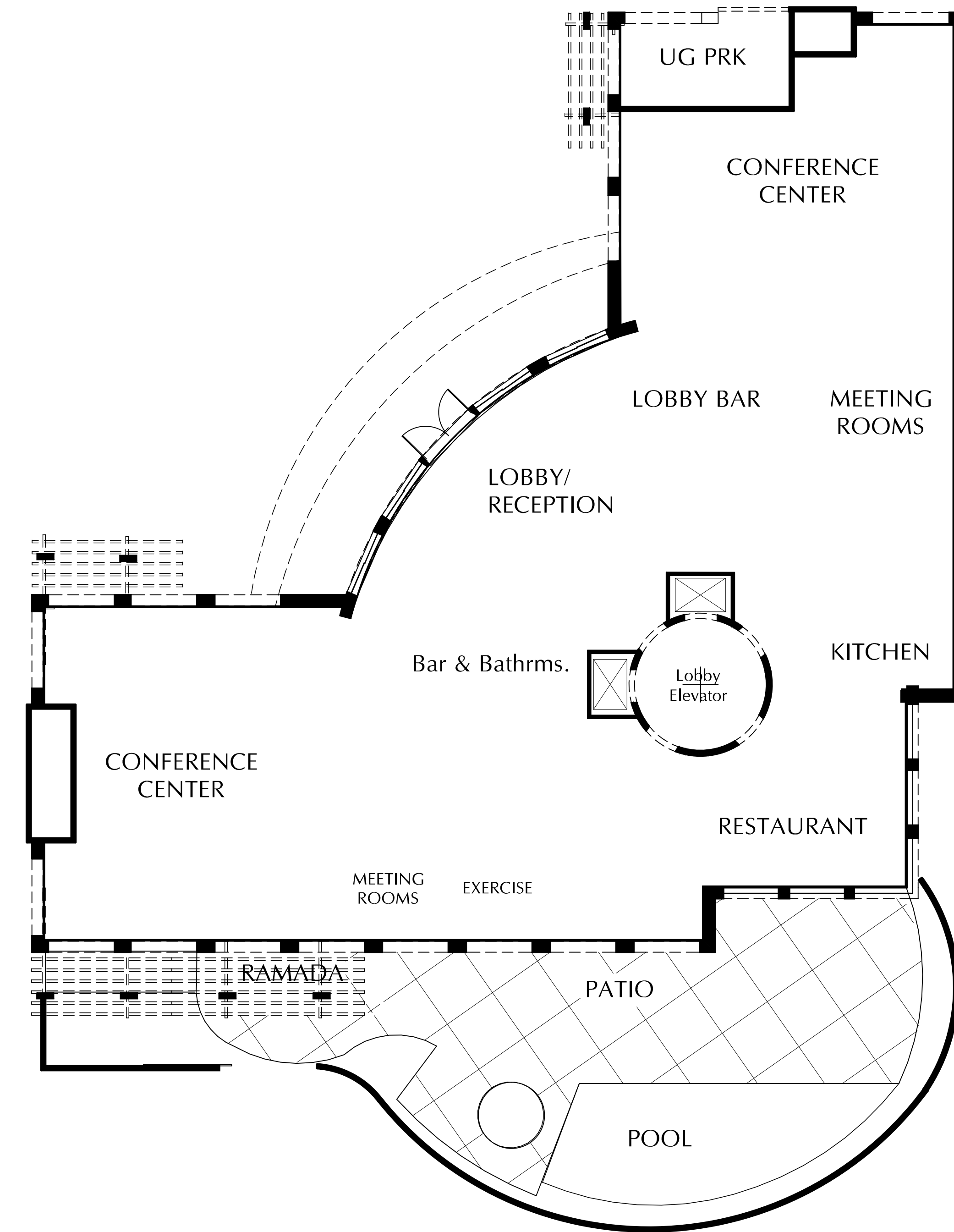
7th FLOOR
SCALE: 1/16" = 1'-0"



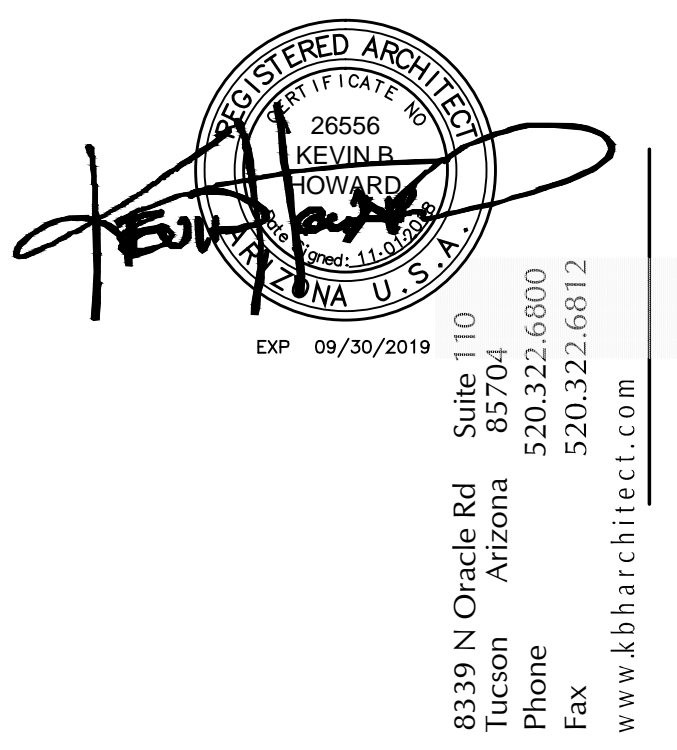
TYPICAL FLOOR
SCALE: 1/16" = 1'-0"

4 SUITES = 540 SQ FT
 14 SUITES = 650 SQ FT
 24'x27'
 1 SUITE = 990 SQ FT
 1 SUITE = 1720 SQ FT

120 UNITS
AS SHOWN



1st FLOOR
SCALE: 1/16" = 1'-0"



Kevin B. Howard
ARCHITECTS
Incorporated
AIA

GRANDE VITA
a BioCity Enterprise A Khangura Development
10243 E. Hampton Ave. Mesa, Arizona, 85209

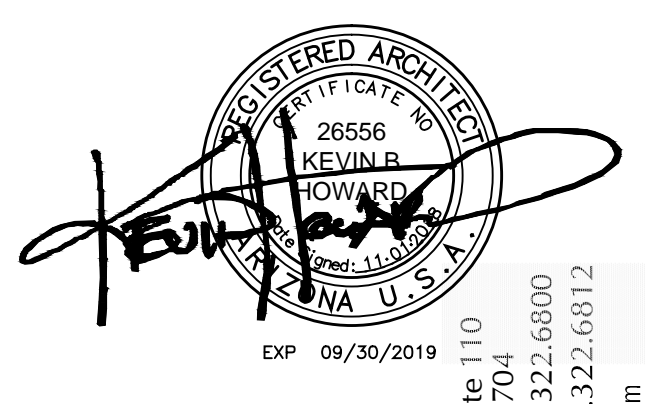
HOTEL # 2

© 2018 Kevin B. Howard Architects, Inc. All rights reserved.
 THESE DRAWINGS ESTABLISH THE GENERAL STANDARDS OF QUALITY AND DETAIL FOR DEVELOPING A CONSTRUCTION CONTRACT. ALL INFORMATION ON THESE DRAWINGS ARE THE PROPERTY OF KBH ARCHITECTS AND ARE INTENDED FOR THIS PROJECT ONLY.

Job: 2017-12
 Date: 11.01.2018
 REVISIONS:

Drawn By: J. E. Brown
 H.S. Walker
 Checked By: J. E. Brown

A6.0



8339 N Oracle Rd
Suite 110
Mesa, Arizona 85207
Phone: 480.332.6800
Fax: 480.332.6812
www.kbharchitect.com

Kevin B Howard
ARCHITECTS
Incorporated
AIA

GRANDE VITA
a BioCity Enterprise A Khangura Development
10243 E. Hampton Ave, Mesa, Arizona, 85209

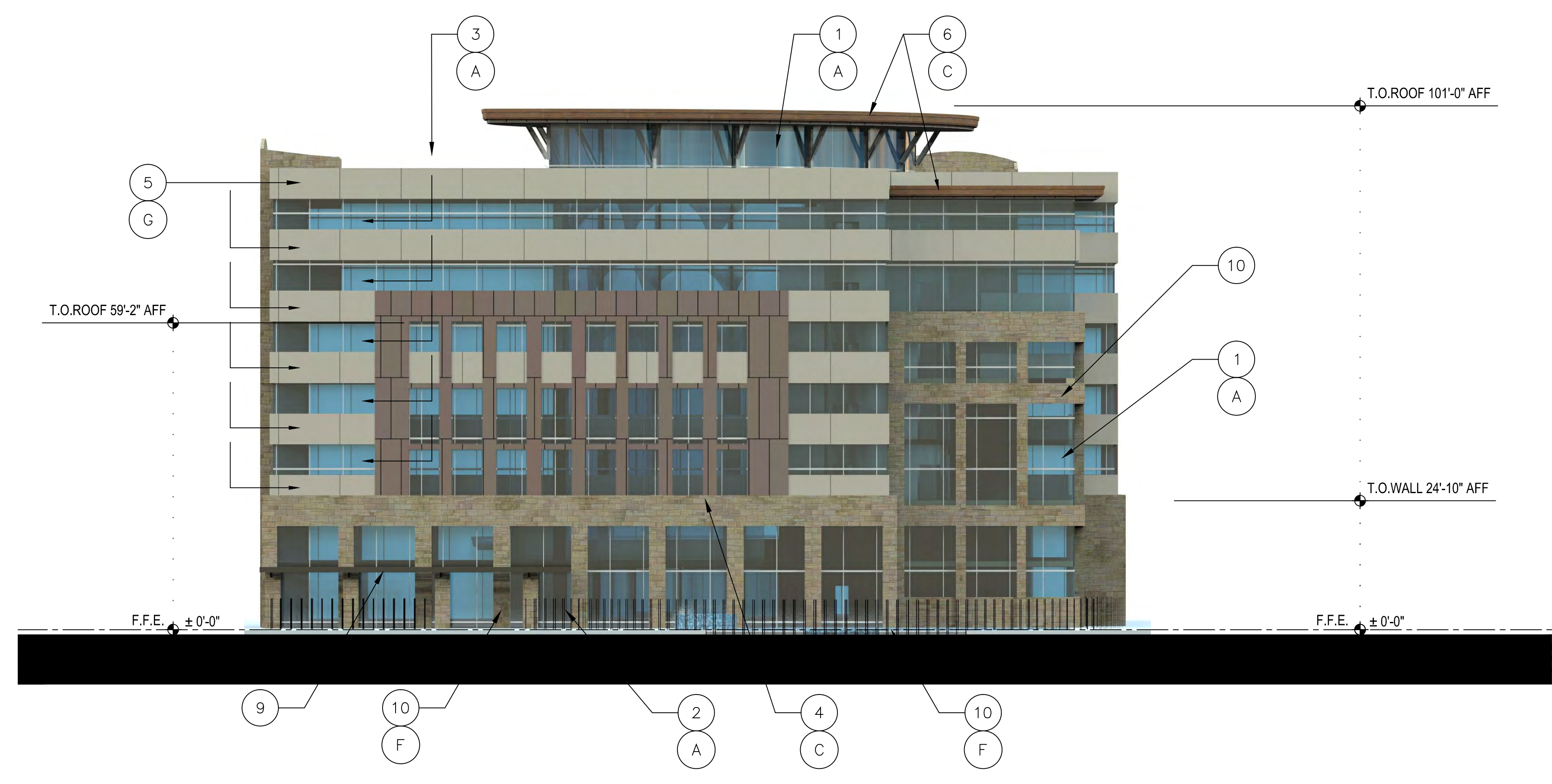
HOTEL #2
ELEVATIONS

© 2018 Kevin B Howard Architects, Inc.
All rights reserved.
THESE DRAWINGS ESTABLISH THE GENERAL
STANDARDS OF QUALITY AND DETAIL FOR
DEVELOPING A CONSTRUCTION CONTRACT.
ALL INFORMATION ON THESE DRAWINGS ARE
THE PROPERTY OF KBH ARCHITECTS AND
ARE INTENDED FOR THIS PROJECT ONLY.

Job: 2017-12
Date: 11.01.2018
REVISIONS:

Drawn By:
J. E. Brown
H.S. Walker
Checked By:
J. E. Brown

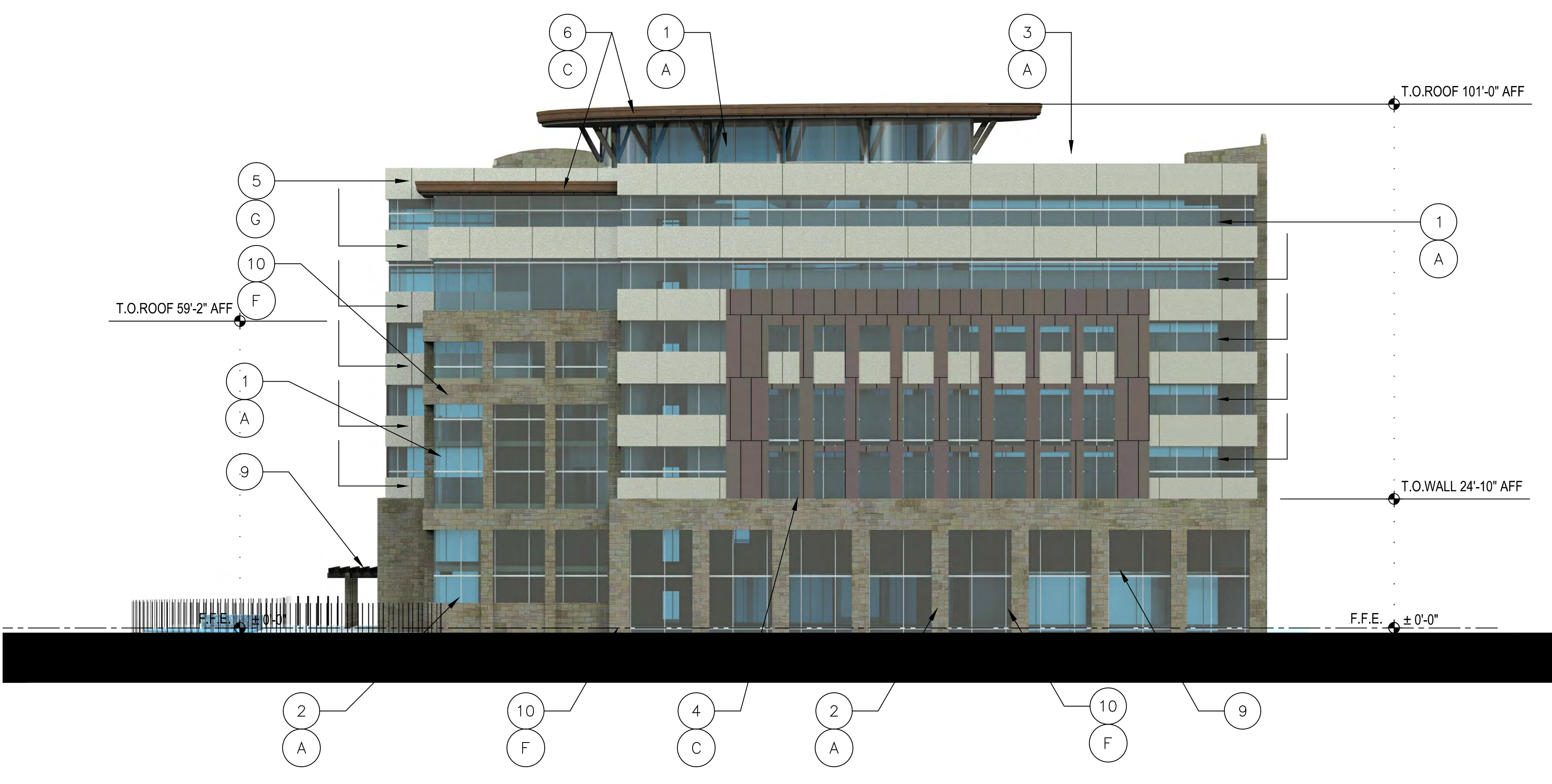
A6.1



SOUTH ELEVATION
SCALE: 1/16" = 1'-0"



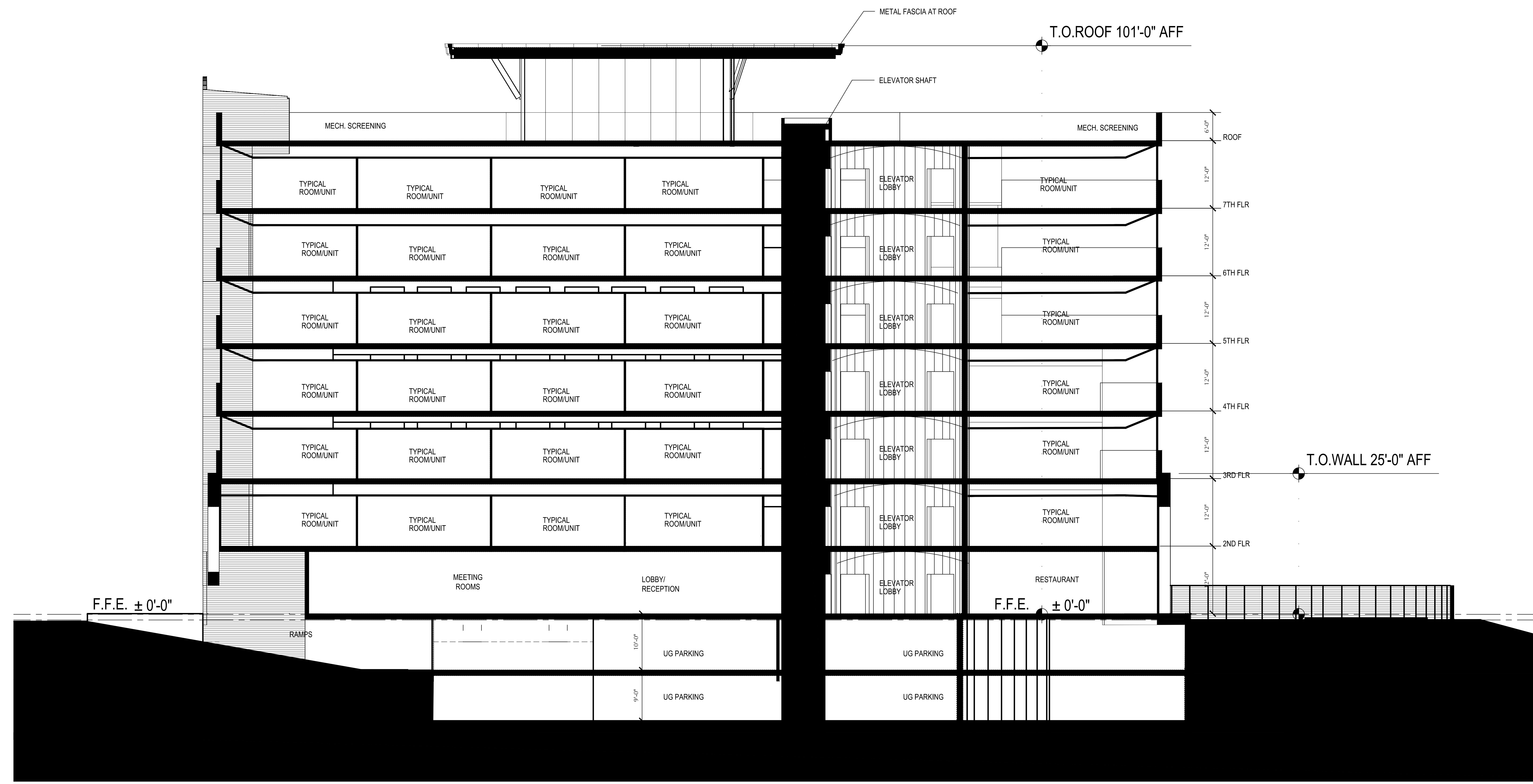
NORTH ELEVATION
SCALE: 1/16" = 1'-0"



EAST ELEVATION
SCALE: 1/16" = 1'-0"



WEST ELEVATION
SCALE: 1/16" = 1'-0"

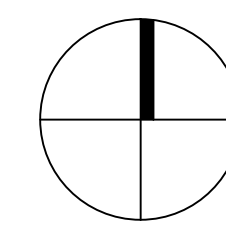


TRANSVERSE BUILDING SECTION

SCALE: 1/8" = 1'-0"

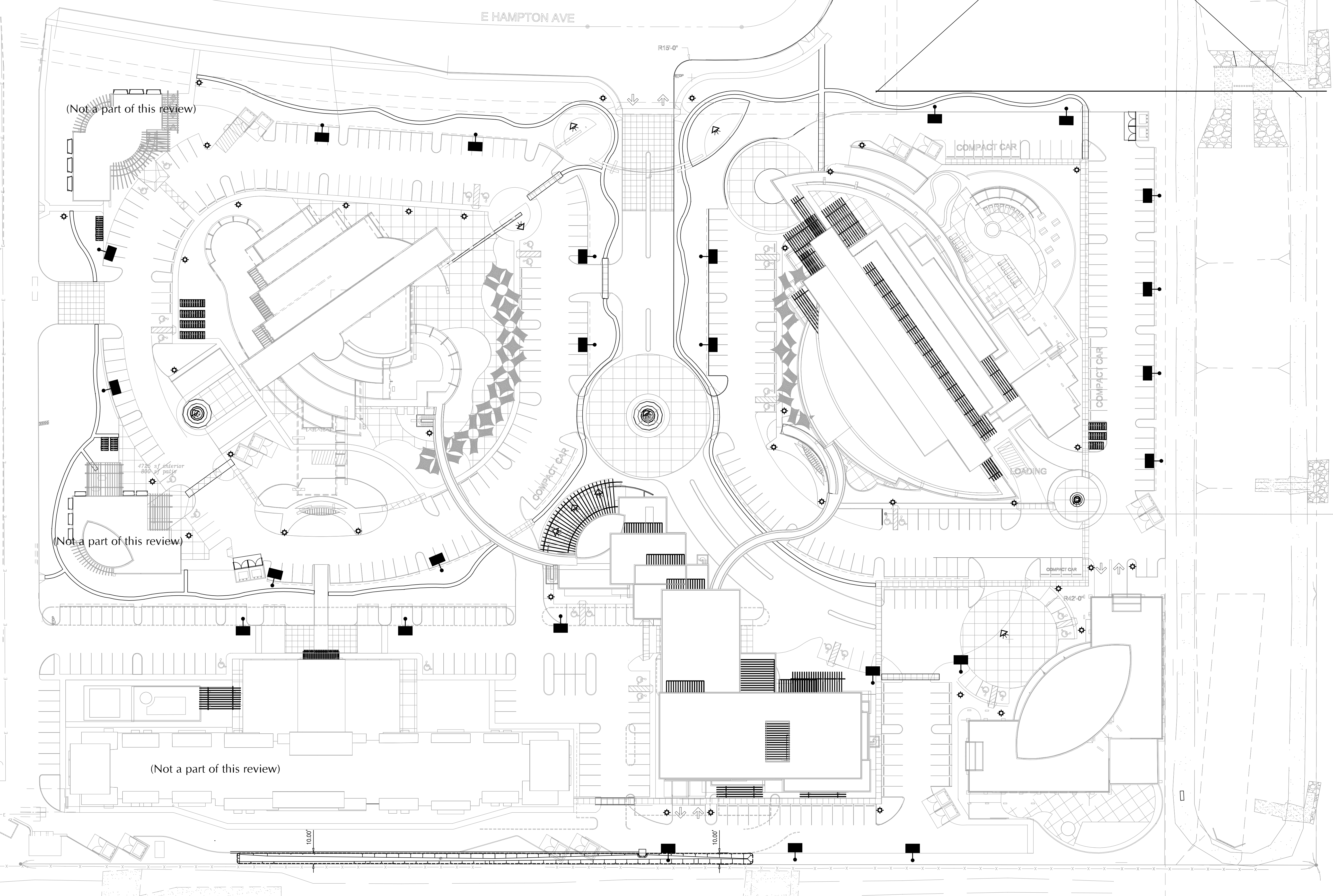
SITE LIGHTING

SCALE: 1" = 40'-0"



E HAMPTON AVE

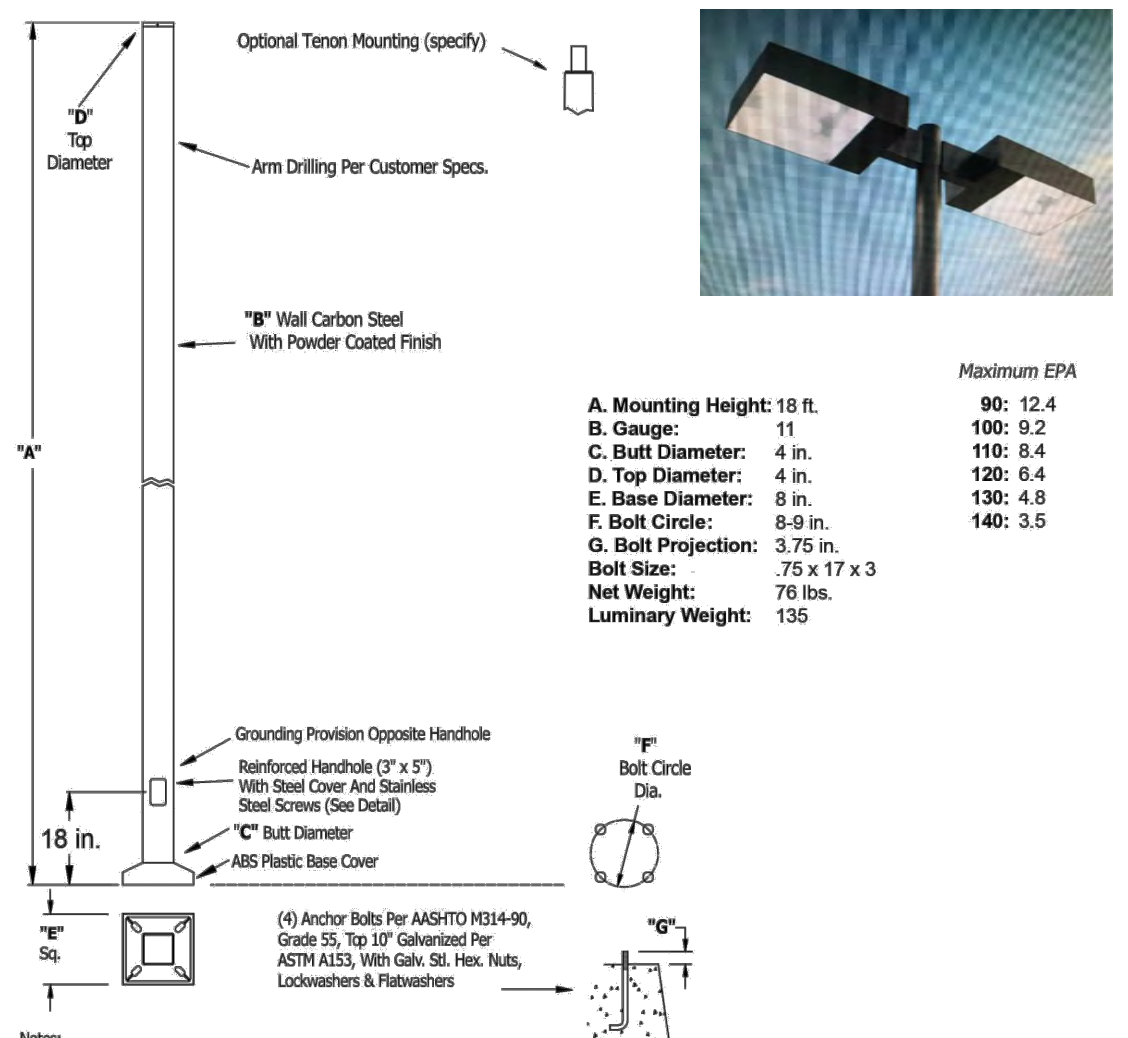
FUTURE PHASE III
(Not a part of this review)



ELECTRICAL LEGEND

- FOUNTAIN UP LIGHTS
- 18'-0" HIGH PARKING LOT LIGHT STANDARD
- 3' HIGH BOLLARD LIGHT

18 Foot 4 Inch Square Steel Light Pole - 11 Gauge - #547092



Notes:
 1) Pole shaft shall be weather-grade, cold-rolled, commercial quality carbon steel tubing conforming to ASTM A500 Grade B. Options include 1 1/2 gauge and 1 3/8 gauge. All flange steel conform to A500 D1 using PP10S-6 electrodes.
 2) Effective Projected Area (EPA) in square feet. EPA's calculated using wind velocity (mph) indicated in accordance with 2009 ASHRAE 90.1 using a 25 year design life. Maximum EPA is based on the luminaire weight shown. Increased luminaire weight may be reduced the maximum EPA. If weight is exceeded, or if other design life or code is required, please consult the factory.

Energy Light 800 E. Northwest Hwy. Peattine IL, 60067

.hess

LINEA
 LINEA LED Lichtpoller
 19.102000.v009y 8 LED WEIR (CA,3000K) - 10W SKI

Illuminating bollard LINEA
 Made of galvanneal steel
 Glass cover of polycarbonate (PC)
 Equipped with 8 high output LEDs - Approx. 10W
 Colour: white (approx.3000K)
 Ingress protection IP65, protection rating I
 Total height above ground 1920 mm
 LSH 550 mm
 Embedded base with opening for cable entry
 Colour: DR 793

Technical values

Wind catching surface	0,18 m²
ULDK	6%
IK Code	IK09
Ingress protection	IP65
Rated input power [W]	10,0
Rated luminous flux [lm]	254,0
Efficiency [lm/W] system	25,4

LED lifetime:
 L70 B50 / 50.000h - TA = 25°C
 L70 B50 / 50.000h - TA 25 - 45°C
 EE

Advantages

- Optimal illumination of foot paths and building entrances
- Standard conforming pathway lighting with minimal energy consumption
- Special patented LED design for extremely broad light distribution
- Highly vandal resistant

Downloads

Drawings: Linea_LP_ER.png
 Installation instructions: HessMA_LINEA_LED_POLLER.pdf
 IK test certificate: Hess LP Linea LP PC Ikar 210710.pdf

Photometric reports

REGISTERED ARCHITECT
 26556
 KEVIN B. HOWARD
 ARCHITECT
 8339 N Oracle Rd
 Suite 110
 Phoenix, Arizona 85029
 Phone: 602.992.6800
 Fax: 602.992.6812
 www.kbharchitect.com
 EXP. 09/30/2019

Kevin B. Howard
ARCHITECTS
 Incorporated
 AIA

GRANDE VITA
 a BioCity Enterprise A Khangura Development
 10243 E. Hampton Ave, Mesa, Arizona, 85209

Site Lighting

Job: 2017-12
 Date: 11.01.2018
 REVISIONS:
 Drawn By: J. E. Brown
 Checked By: H.S. Walker
 J. E. Brown